

Report No.: **158246510a 001**

Page 1 of 63

Client: DEPESCHE VERTRIEB GMBH & CO. KG

Contact Information: Vierlander Strasse 14, 21502 Geesthacht, Germany

Test item(s): Non toys

**Identification/
Model No(s):** TOPModel DIY Mobile Hanger
Item no.: 0011921/0411921
Order no.: 11921/A

Sample obtaining method: Sending by customer

Condition at delivery: Test item complete and undamaged.

Sample Receiving date: 2022-01-20, 2022-03-09

Testing Period: 2022-01-21 to 2022-03-23

Place of testing: Chemical laboratory Hong Kong, Toys laboratory Hong Kong

Test Specification:

Please refer to "Test Result Summary List" on page 2 for details

Other information:

The provided age grade of the item(s) : Not Provided

The appropriate age grade of the item(s) : For age over 3 years.

The item(s) was/ were tested for the age of over 3 years.

Packaging provided: Artwork

The selection of the tested materials and parameters is based on testing experience according to the principles of proportionally considering technological probabilities. The analyses are focused on expected harmful substances caused by nature of materials and production conditions.

**For and on behalf of
TÜV Rheinland Hong Kong Ltd.**

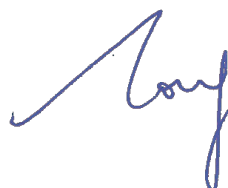


Amenda Yung/
Project Manager

2022-03-30

Date

Name/Position



Wong Yiu Tong , Tommy/
Senior Lab Manager

2022-03-30

Date

Name/Position

Sample information is provided by customer. Test result is drawn according to the kind and extent of tests performed.

This test report relates to the above mentioned test sample. Without permission of the test center this test report is not permitted to be duplicated in extracts. This test report does not entitle to carry any safety mark on this or similar products.

"Decision Rule" document announced in our website (<https://www.tuv.com/landingpage/en/qm-gcn/>) describes the statement of conformity and its rule of enforcement for test results are applicable throughout this test report.

Test Result Summary :

Test Specification:

- 1 - Sharp points
- Sharp edges
- Address of manufacturer or responsible trading company
- Definite identification of the article

Test result:

PASS
 PASS
 Refer to result page
 Refer to result page

The above test(s) are tested according to "The General Product Safety Directive (GPSD): 2001/95/EC"

- | | |
|------------------------------------------------------------------------------------------------------------------------------------------------------------|------|
| 2 Depesche requirement:
EN 71-3:2019+A1:2021 Migration of 19 Elements | PASS |
| 3 Depesche requirement:
Formaldehyde content by ISO 14184-1 according to REACH regulation (EC) No. 1907/2006 and its amendments Annex XVII Entry 72 | PASS |
| 4 Total Cadmium Content - according to REACH regulation (EC) No. 1907/2006 Annex XVII Entry 23 and its amendments | PASS |
| Total Lead Content - REACH Regulation (EC) No. 1907/2006 Annex XVII Entry 63 and its amendments | PASS |
| 5 Depesche requirement:
Total Lead Content | PASS |
| 6 Depesche requirement:
Phthalates content | PASS |
| 7 Banned azo dyes in accordance to REACH regulation (EC) No. 1907/2006 and amendment no. 552/2009 Annex XVII Item 43 (formerly known as 2002/61/EC) | PASS |
| 8 Depesche requirement:
Allergizing Disperse Dyes | PASS |
| 9 Packaging Waste Total Heavy Metal Content - 94/62/EC | PASS |
| 10 Polycyclic aromatic hydrocarbons (PAHs) - REACH regulation (EC) No. 1907/2006 with Amendment No. 552/2009 Annex XVII Item No. 50 and (EU) No. 1272/2013 | PASS |
| 11 Polycyclic aromatic hydrocarbons (PAHs) - according to GS Specification - AfPS GS 2019:01 PAK | PASS |
| 12 Short Chain Chlorinated Paraffin (C10-C13) (SCCP) - according to Regulation (EU) 2019/1021 | PASS |
| Depesche requirement:
Medium Chain Chlorinated Paraffins (C14 - C17) (MCCP) | PASS |
| 13 Depesche requirement:
Odour, qualitative | PASS |

Test Report No.: 158246510a 001

Page 3 of 63

Material List:

Item: TOPModel DIY Mobile Hanger

Item no.: 0011921/0411921

Order no.: 11921/A

Material No.	Material	Color	Location
M001	Whole Product	Multicolor	Whole Product
M002	Coating	Transparent red	Beads
M003	Coating	Transparent yellow	Beads
M004	Coating	Transparent blue	Beads
M005	Coating	Transparent pale blue	Beads
M006	Coating	Transparent green	Beads
M007	Coating	Red	Beads
M008	Coating	Reddish orange	Beads
M009	Coating	Pink	Beads
M010	Coating	Green	Beads
M011	Coating	Flesh	Beads
M012	Coating	Dark green	Beads
M013	Coating	Yellow	Beads
M014	Coating	Purple	Beads
M015	Coating	Dark purple	Beads
M016	Coating	Light green	Beads
M017	Coating	Turquoise	Beads
M018	Coating	Gold	Beads, Heart, Star beads
M019	Coating	Black	Beads
M020	Coating	Silvery	Heart, Star beads
M021	Plastic	Transparent	Beads
M022	Plastic	Transparent flesh	Beads
M023	Plastic	White	Beads
M024	Plastic	Pearl white	Beads
M025	Plastic	Multicolor	Rainbow colour bead
M026	Plastic	Blue/ White	Beads
M027	Plastic + printing	White + Pink/ Black	Dragon fruit bead

Test Report No.: 158246510a 001

Page 4 of 63

M028	Plastic + printing	White + Pink/ White/ Blue/ Dark pink	Flower bead
M029	Plastic + printing	White + Pale green/ Green	Kiwi bead
M030	Plastic + printing	White + Dark blue/ Yellow	Flower bead
M031	Plastic + printing	White + Yellow	Lemon bead
M032	Plastic + printing	White + Red/ Green/ Black	Watermelon bead
M033	Plastic + printing	White + Pale green/ Green/ Beige	Apple bead
M034	Plastic + coating	Transparent + Transparent red	Beads
M035	Plastic + coating	Transparent + Transparent yellow	Beads
M036	Plastic + coating	Transparent + Transparent blue	Beads
M037	Plastic + coating	Transparent + Transparent pale blue	Beads
M038	Plastic + coating	Transparent + Transparent green	Beads
M039	Plastic + coating	Transparent flesh + Silvery	Beads
M040	Plastic + coating	White + Red	Beads
M041	Plastic + coating	White + Reddish orange	Beads
M042	Plastic + coating	White + Pink	Beads
M043	Plastic + coating	White + Green	Beads
M044	Plastic + coating	White + Flesh	Beads
M045	Plastic + coating	White + Dark green	Beads
M046	Plastic + coating	White + Yellow	Beads
M047	Plastic + coating	White + Purple	Beads
M048	Plastic + coating	White + Dark purple	Beads
M049	Plastic + coating	White + Light green	Beads
M050	Plastic + coating	White + Turquoise	Beads
M051	Plastic + coating	White + Gold	Beads, Heart, Star beads
M052	Plastic + coating	White + black	Beads
M053	Plastic + coating	White + silvery	Heart. Star beads
M054	Textile	Black	String
M055	Textile	Pink	String

Test Report No.: 158246510a 001

Page 5 of 63

M056	Textile	Pale grey	String
M057	Coating	Blue	Pattern on cube shaped alphabet beads
M058	Coating	Purple	Pattern on cube shaped alphabet beads
M059	Coating	Pink	Pattern on cube shaped alphabet beads
M060	Coating	Green	Pattern on cube shaped alphabet beads
M061	Coating	Dark pink/ Black	Pattern on smile face beads
M062	Plastic	White	Cube shaped beads, Smile face beads
M063	Plastic + coating	White + Blue	Cube shaped alphabet beads
M064	Plastic + coating	White + Purple	Cube shaped alphabet beads
M065	Plastic + coating	White + Pink	Cube shaped alphabet beads
M066	Plastic + coating	White + Green	Cube shaped alphabet beads
M067	Plastic + coating	White + Dark pink/ Black	Smile face beads
M068	Coating	Multicolor	Pattern on instruction booklet
M069	Paper + coating	White + Multicolor	Instruction booklet
M070	Metal	Silver	Staple on instruction booklet
M071	Plastic	Transparent	Blister (Packaging)
M072	Plastic + printing + paper	Transparent + Multicolor + White	Laminated paper box (Packaging)

Test Report No.: 158246510a 001

Page 6 of 63

1.GPSD- General Product Safety Directive**Result:****1. Physical and Mechanical Test**

Test No.	Material No.	Description	Test Method	Result
T001	M001	Requirement for sharp points	Reference to EN71 Part 1	PASS
		Requirement for sharp edges	Reference to EN71 Part 1	PASS

2. General Product Labeling

Test No.	Material No.	Description	Result
T001	M001	Address of manufacturer or responsible trading company	Present (Packaging)
		Definite identification of the article	Present (Packaging)

These labeling shall be indicated on the products, or where that is not possible, on its packaging or in documents accompanying the products.

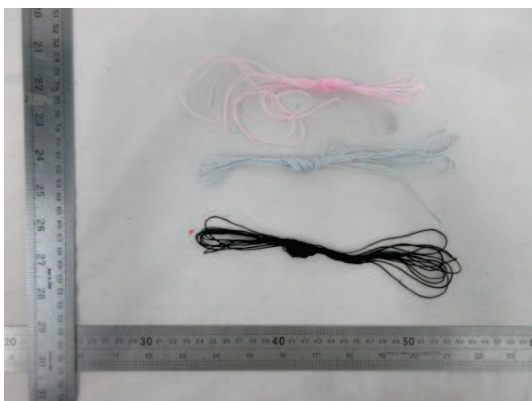
Remark:

[^] The manufacturer/trader/applicant has provided the artwork for assessment in this test report.

Test Report No.: 158246510a 001

Page 61 of 63

Sample Photos



Test Report No.: 158246510a 001

Page 62 of 63

Sample Photos



Test Report No.: 158246510a 001

Page 63 of 63

Sample Photos



- END -